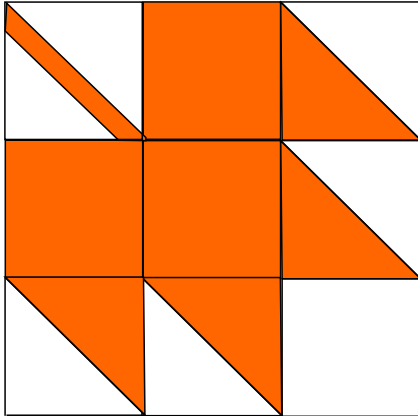


Maple Leaf

Level: Easy

Finished Size: 25cm (10")



This block measures 25cm (10") when sewn with a 1/4" seam allowance.

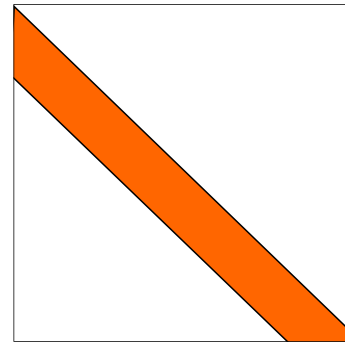
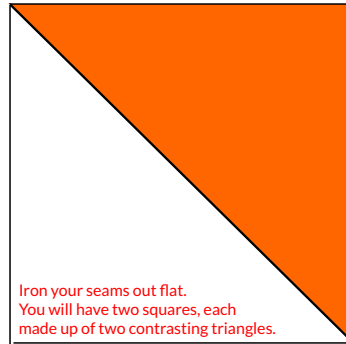
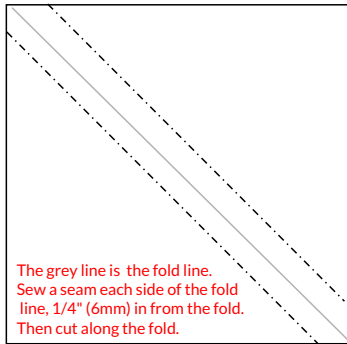
Use a plain background with a pattern for the leaf, or reverse it, using a patterned background and white/solid colours for the leaf itself.

Mix and match these styles to form a really interesting quilt, with sashing between the blocks.

Getting Started

Print or trace the templates shown on the next page onto card and cut out. Then trace the pieces onto your fabrics and cut out (the number of pieces required and fabric suggestions are shown on each of the templates) and the lines inside each piece represent the sewing line when using a 6mm (1/4") seam allowance.

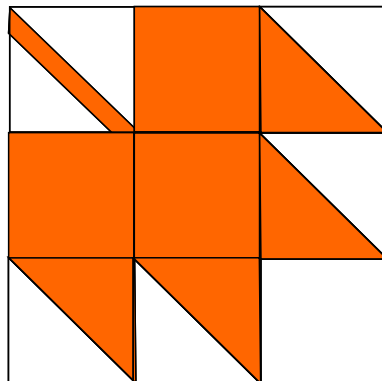
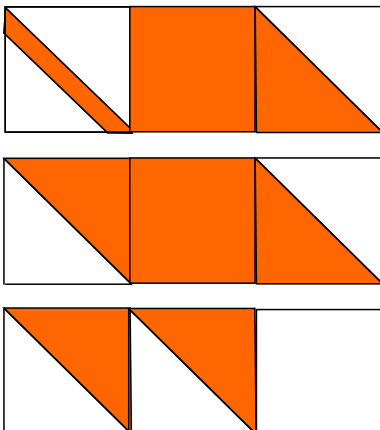
Piecing Together



1. Place 2 contrasting squares on top of each other, right sides facing and pin together. Fold the two layers diagonally into a triangle and iron the crease in. Open the fabrics out and sew two lines, one each side of the fold, each parallel with the fold, using a 6mm (1/4") seam allowance.

2. Now cut along the fold. Open your pieces and you will have two squares, each made out of two triangles. Iron the seams flat and then repeat these steps with another 2 pieces of fabric - you will end up with four squares, each made of two triangles.

3. Sew a triangle on each long side of the stem piece and trim back into a square. You will find that the pieces won't line up in an obvious way, if you need help with this, see the full tutorial on our blog for detailed, step by step instructions.



Lay your pieces out to form your block.

Divide the block into 3 rows and sew the pieces in each row together. Then sew the rows together, making sure all the points line up.

Trim your block and you are ready to go!

See our sew along for this block on our blog, with more detailed instructions and step by step pictures (printstopolkadots.co.uk/blog) and don't forget to send us pictures of your finished blocks/quilts, via the blog, Facebook or by tagging us in on Instagram #printstopolkadots.

We love seeing your makes!

Maple Leaf

Level: Easy

Finished Size: 25cm (10")

